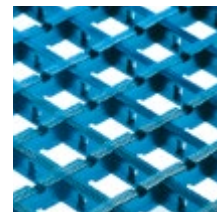


Mats and Flooring

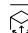
cleaning and anti-fatigue



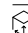
- ▶ Made of flexible PVC.
- ▶ Diagonal ribbing ensures sufficient adhesion.
- ▶ Reduces worker fatigue.
- ▶ Tested for flammability.
- ▶ Double-sided.
- ▶ Resistant to weak acids and alkalis.

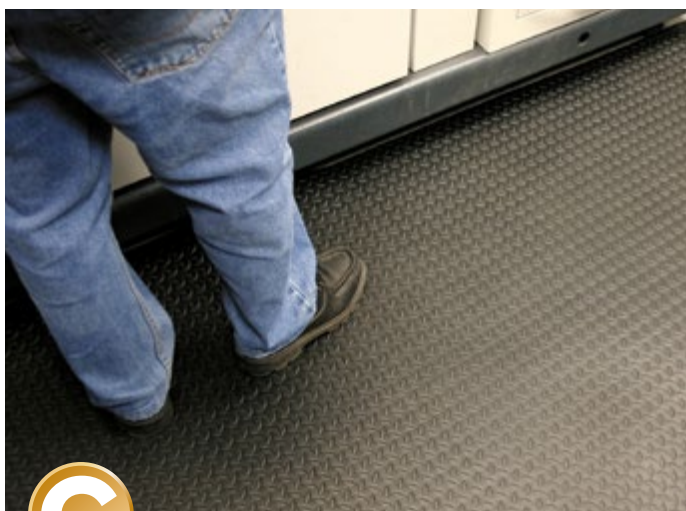


Type **3168**

 0.6 × 5.0 m, 10 mm*

Type **3169**


 0.9 × 5.0 m, 10 mm*



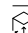
- ▶ Made of 100 % vinyl foam with closed cells.
- ▶ Increases worker productivity and concentration.
- ▶ Pattern reduces risk of tripping in dry environments.
- ▶ Complies with anti-slip standard EN 13552 category R11.
- ▶ Meets flammability standard.



Type **4396**

 0.9 × 1.5 m, 9 mm*

Type **4397**

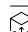
 0.9 × 18.3 m, 9 mm*



- ▶ Made of rubber mix.
- ▶ Provides sound and temperature insulation.
- ▶ Adheres when laid down, no need to apply adhesive.
- ▶ Circular pattern reduces risk of slipping.
- ▶ Complies with anti-slip standard EN 13552 category R10.
- ▶ Meets flammability standard.




Type **4622**

 1.2 × 5 m, 3 mm*



Type **4623**

 1.2 × 5 m, 3 mm*



EN
13552

For
heavy-duty
workplaces

* Mat height